

# Identifying your plumbing system

Before choosing your showering system be sure to determine the system you have installed in your home so that the system you choose will work to its maximum performance.

## Water Pressure

These symbols appear throughout the site as a reminder to check the suitability of the tap or shower to your system's water pressure.



**LOW PRESSURE**  
0.2 - 0.5 bar



**COMBI BOILER**



**HIGH PRESSURE**  
1.2 - 1.5+ bar

### Low Pressure System

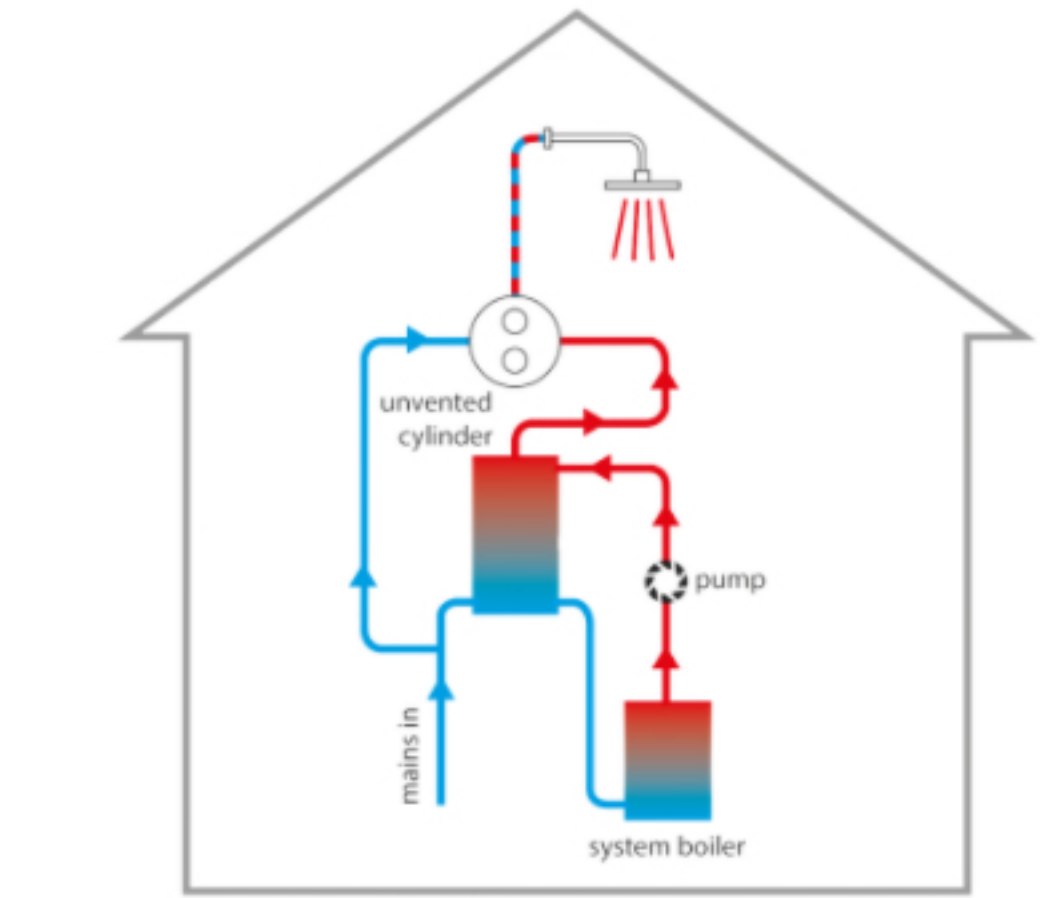
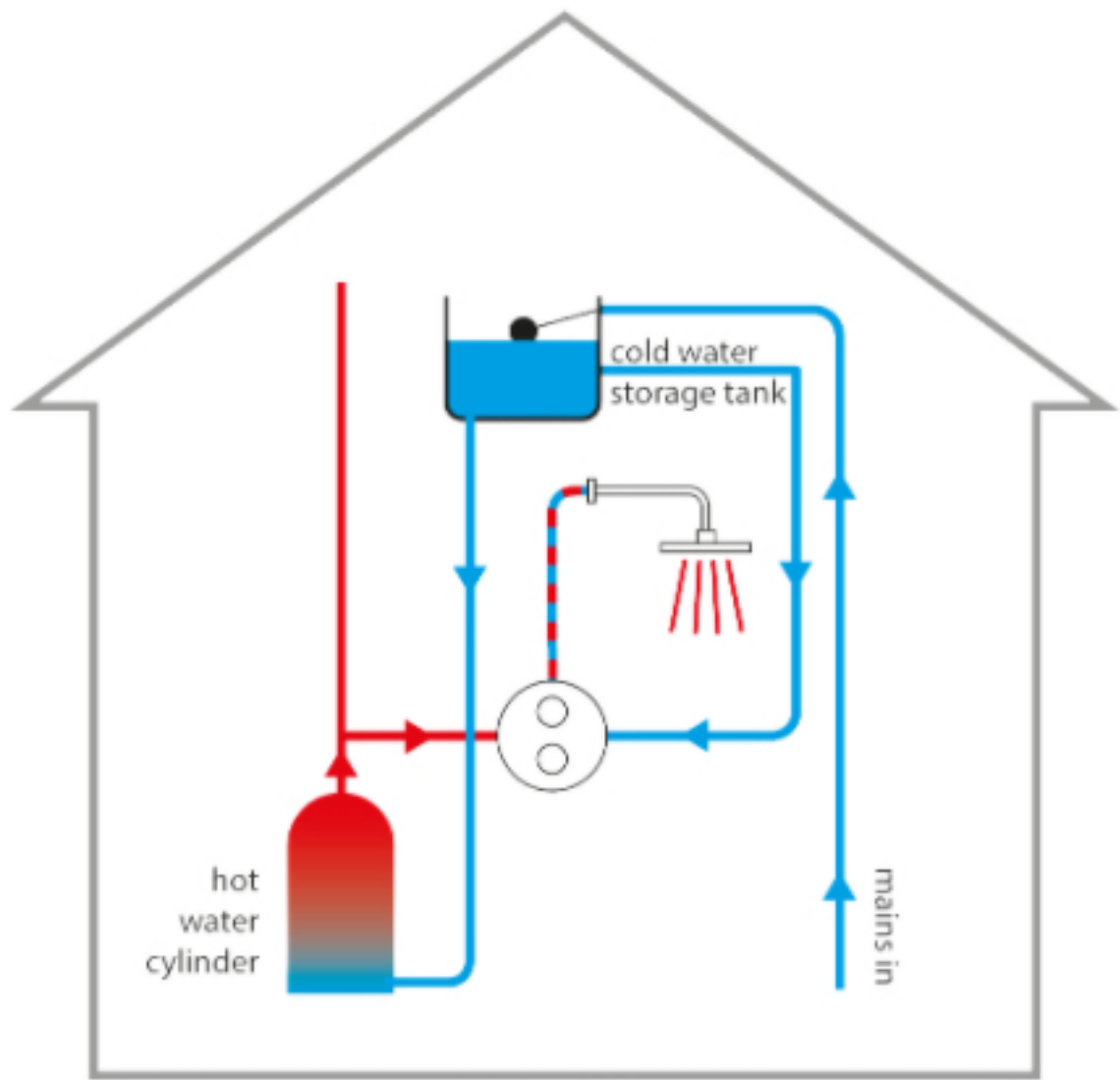
If you have a hot water storage cylinder in your airing cupboard and a cold water tank in the loft you will have a low pressure system.

If you run this without a pump you can choose any product displaying this low pressure icon.

Hot water cylinder installed in the airing cupboard.



Cold water tank installed in the loft.



### Unvented Cylinder

If you have a hot water cylinder in your airing cupboard with an expansion tank and no cold water tank in the loft. You can choose any product with the High Pressure icon.

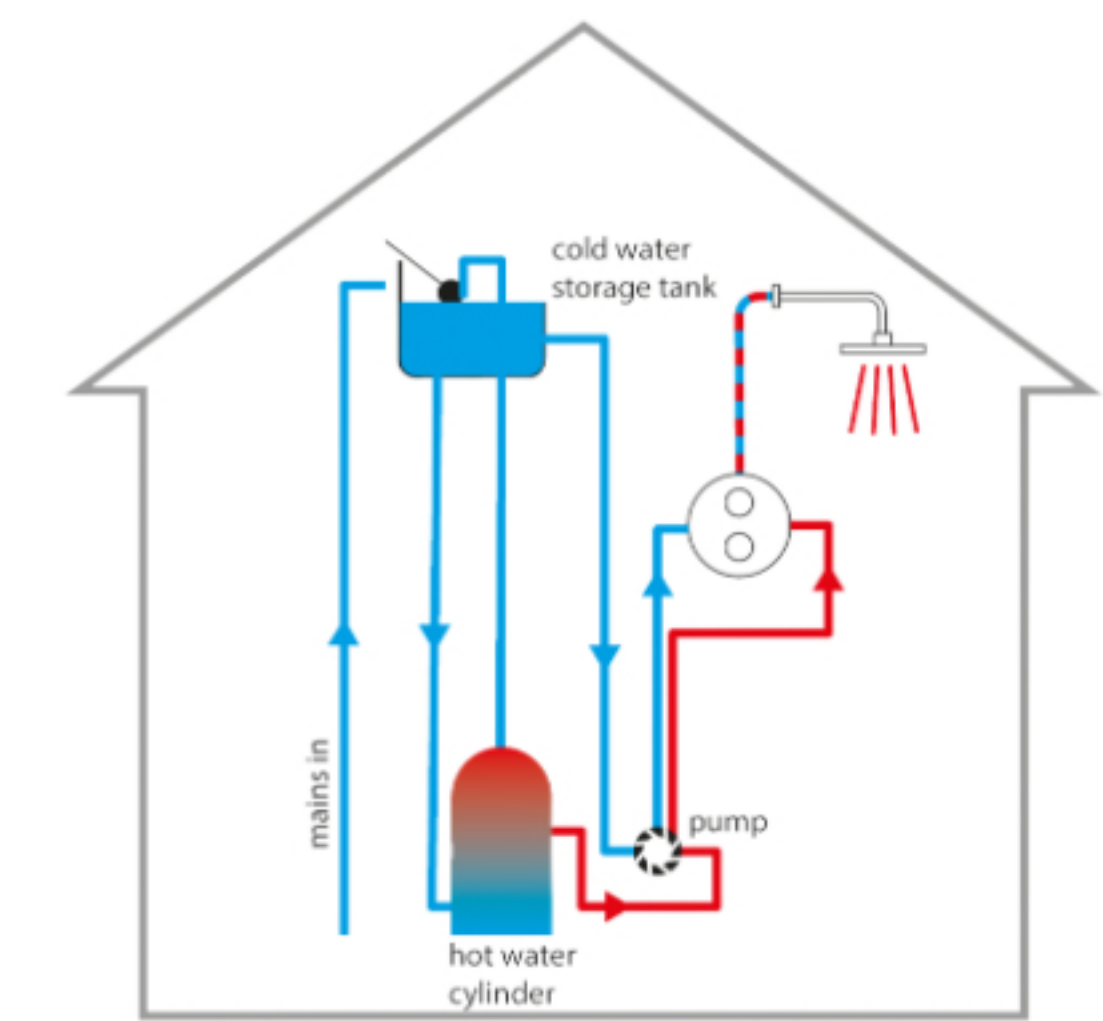
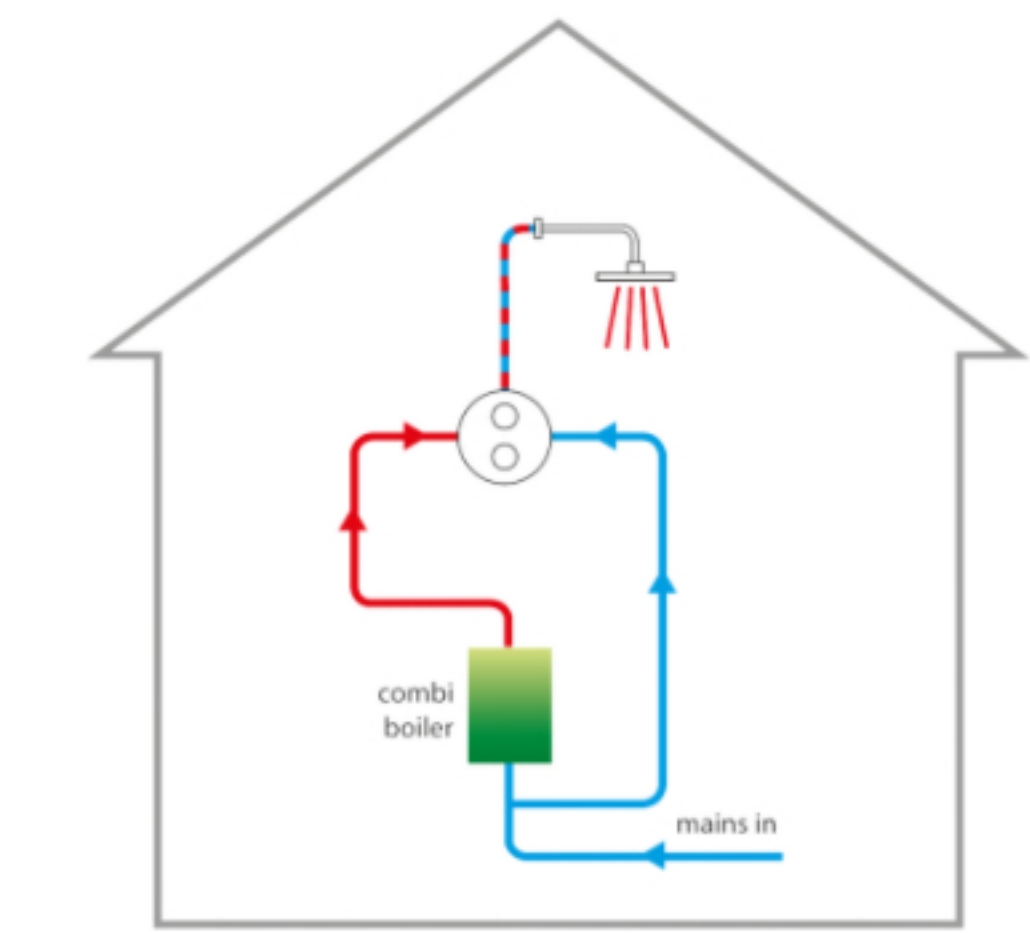
Shower systems suitable for gravity fed and combi boilers can also be used on a high pressure system.



### Combination Boilers

If you have no water storage and a boiler in your kitchen/garage (usual places) you will more than likely have a combi boiler, which instantly heats mains fed cold water and you will not need a storage tank. Choose any product displaying this icon.

Products suitable for gravity fed and unvented installations may also be used with combi boilers.



### Pumped Systems

If you have a cold water tank in the loft and a booster pump fitted to your system, your system will be pumped and you can choose any product displaying the High Pressure icon. Please check the minimum recommended pressure meets your pump requirements.

Products suitable for gravity fed and unvented installations may also be used with shower pumps.

